

coll 286.06 Ac.  
(Grant J. Whorton)  
(13/781:O.R.)

1118.0'

50.511 ACRES

15' access easement 290/568 O.R.

Drill Site 1  
290/568 O.R.

Drill Site 2  
290/568 O.R.

approx. loc. 30' easement  
Coastal Oil & Gas Co. USA, Ltd.  
301/321 O.R.

COMPANY

523.0'

1911.1'

449.6'

49.2'

685.6'

643.2'

36.5 Ac.

18 Ac.

49.5 Ac.

1051.3'

coll 241.07' x 880.50' Tr.  
Norman Boardman, Sr. et ux  
622/163:R.

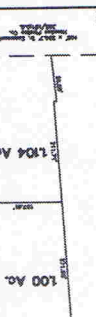
241.07'

coll 482.07' x 680.50' Tr.  
Norman Boardman, Sr. et ux  
622/21:O.R.

482.15'



100 Ac.



100 Ac.

coll 4.0 Ac.  
August 22/103:O.R. et ux  
622/403:O.R.

1

2

BM Nail Hub  
EL=91.3'

4

5

6

7

352.6'

91.8' 220.7'

60.0'

50.5'

661.7'

7.199'

866.7'

1140.2'

7

3

4

5

6

576.4'

County Road No. 135 (Lee's Lane)

County Road No. 144 (Greets Road)

County Road No. 135 Lee's Lane

MOORE LANE

coll 32.66 Ac.  
Jimmie Chambers, et ux  
426/311:O.R.

